

Art. Nr. / part no. Beschreibung

description

CHF inkl. MwSt/
CHF ind. VAT

ROVER

416 Si Hatchback, 1996=>

1.6l 82 kW
◦ 704096 0501 Sportschalldämpfer mit 1 Endrohr 92x78 mm

416 Si Hatchback, 1996=>

1.6l 82 kW
Sport exhaust with 1 tail pipe 92x78 mm **476,00**



75, 2000=>

2.0l 16V CDT 85 kW
◦ 756000 0502 Sportschalldämpfer mit 2 Endrohren 92x78 mm

75, 2000=>

2.0l 16V CDT 85 kW
Sport exhaust with 2 tail pipes 92x78 mm **600,00**



SEAT

Mii GT, Typ AA, 2012=>

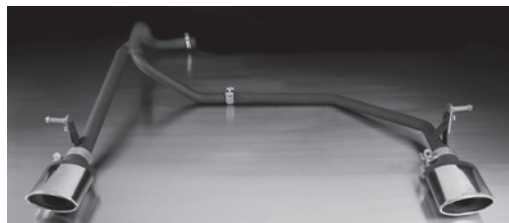
1.0l 44 kW (CHYA); 1.0l 55 kW (CHYB)
Rohrbogen inklusive verstellbare Halter sodass die Endrohre auf Wunsch in die Heckschürze integriert werden können! Dafür notwendige Ausschnittschablone liegt bei!

791013 1613S Rohrbogen mit li/re je 1 Endrohr 120x74 mm schräg

Mii GT, type AA, 2012=>

1.0l 44 kW (CHYA); 1.0l 55 kW (CHYB)
Connection tube inclusive adjustable bracket to integrate the tail pipes in the rear skirt! The required trimming template and instructions are included!

connection tube with L/R each 1 tail pipe 120x74 mm angled **395,00**



Ibiza, Typ 6K, APR1993=>

1.0l 33kW; 1.3l 40kW; 1.4l 44kW; 1.6l 55 kW =>1995;
1.9l Diesel 47 / 50 kW; Anschluß Ø 42mm

2) 790596 0507 Sportschalldämpfer mit 1 Endrohr 97x80 mm

Ibiza, type 6K, APR1993=>

1.0l 33kW; 1.3l 40kW; 1.4l 44kW; 1.6l 55 kW =>1995;
1.9l Diesel 47 / 50 kW; connection Ø 42mm

Sport exhaust with 1 tail pipe 97x80 mm **457,00**

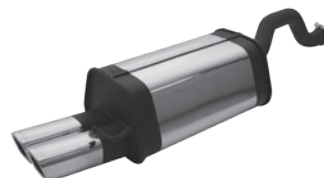


Ibiza Cupra, Typ 6K, 1997=>

2.0l GTI 16V 110 kW; 1.9l TDI 66 / 81 kW
2) 796097 9999 Zwischenrohr für Montage des Serien-Austausch-Vorschalldämpfers
2) 796097 0548 Sportschalldämpfer mit 2 Endrohren 74x65 mm schräg

Ibiza Cupra, type 6K, 1997=>

2.0l GTI 16V 110 kW; 1.9l TDI 66 / 81 kW
Connection tube for mounting of the original exchanged front silencer **70,00**
Sport exhaust with 2 tail pipes 74x65 mm angled **592,00**



796097 0548

Photos can deviate from actual product! Errors & omissions excepted! The latest developments can be found under www.remus.eu
=> from, <= until; 2) As long as stock lasts! 1) ATTENTION: it is not allowed to change the valve setting as per public traffic regulations!
If the valve setting is changed, the exhaust is no longer EC-homologated & no longer street legal. Only for race purposes!
Attention: Unless stated otherwise our sport exhausts only fit the standard rear skirt!